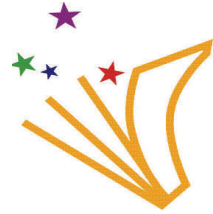




The Oldham County Public Library &  
McDonalds of LaGrange  
present the  
2007 Oldham County Fair



# SPELLING BEE

Duerson Library  
106 East Jefferson St.  
LaGrange, KY 40031  
222-1133

South Oldham Library  
6720 W. Highway 146  
Crestwood, KY 40014  
241-1108

Mahan Oldham Library  
12505 Harmony Land-  
ing  
Goshen, KY 40026

Forms Available at each library branch above and on-line at

[www.oldhampl.org](http://www.oldhampl.org)

**Saturday, August 4**  
**1:30 p.m.**  
**Pageant Building, Oldham County**  
**Fairgrounds**

**1st Place — \$100.00**  
**2nd Place — \$50.00**

- The Spelling Bee is open to all Oldham County students in grades one (1) through five (5).
- Competition will be divided into five grade categories based on the grade just completed.
- National rules will be observed.
- Prizes will be awarded in each category to the winner and first runner-up. Each participant will receive a coupon good for a free hamburger from McDonald's and a fair ribbon.
- Completed entry forms should be turned into any library branch or mailed to the Oldham County Public Library, P.O. Box 406, Buckner, KY 40010.
- Forms are also available on the library's web site at [www.oldhampl.org](http://www.oldhampl.org)
- Sign-up forms will be available at the fair on the day of the spelling bee.



## SPELLING BEE

Oldham County Fair

LaGrange, KY

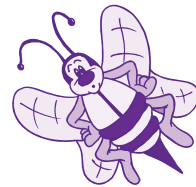


Co-Sponsored by  
**The LaGrange McDonald's  
 Restaurant**  
 and  
**The Oldham County  
 Public Library**



**National Spelling Bee Rules**

- Words used in the spelling bee shall be selected from *Webster's 3rd New International Dictionary*.
- In competition, after the caller gives the contestant a word, the contestant may also pronounce the word before spelling it, after spelling it, or, if he so chooses, not at all.
- The contestant may request a word to be repeated, defined, or used in a sentence. The contestant has one minute to begin spelling the word after it has been made clear. The judge may disqualify any contestant who ignores a request to start spelling.
- Having started to spell a word, a contestant may stop and start over retracing from the beginning, but in the retracing there can be no change of letters and their sequence from those first pronounced. If letters and their sequence are changed in the spelling, the speller will be eliminated.
- Upon missing the spelling of a word, the contestant immediately drops out of the contest. The next word on the caller's list is given to the next contestant.
- When the contestants are reduced to two, the elimination procedure changes. When one contestant misspells a word, the other contestant shall be given an opportunity to spell that same word. If the second contestant spells that word correctly, plus the next word on the caller's list, then the second speller shall be declared the champion.
- If one of the last two spellers misses and the other, after correcting the error, misspells the new word submitted to him, the misspelled new word shall be referred to the first speller. If the first speller then succeeds in correcting the error and correctly spells the next word on the caller's list, he shall be declared champion.



**REMINDERS!**

- Speak clearly and think before you spell.
- Make sure you understand the word.
- Please remember, we must take the first spelling offered.
- Parents & audience: Please do not spell along or mouth the spelling. We will have to throw out any word on which there is any question of audience assistance.

**SPELLING BEE ENTRY FORM**

To enter, complete this form; mail to the Oldham County Public Library, P.O. Box 406, Buckner, KY 40010, or return to any library. Forms available to be printed from library web page at [www.oldhampl.org](http://www.oldhampl.org).

Applicant's Name: .....

Parent's or Guardian's Name: .....

Parent's or Guardian's Address: .....

City: ..... Zip Code: ..... Phone: .....

Circle Grade Last Completed:  School Attended: .....

First (1st)    Second (2nd)    Third (3rd)    Fourth (4th)    Fifth (5th)

Library where form was acquired: .....